

**290 TECHPARK DR.**

FOR LEASE

16,000 to 50,000 SF

Build to Suit



**PROPERTY FEATURES**

- Dock high rear loading
- Drive in door
- 28' Clear height
- Parking for 80 cars
- Drive-in possible

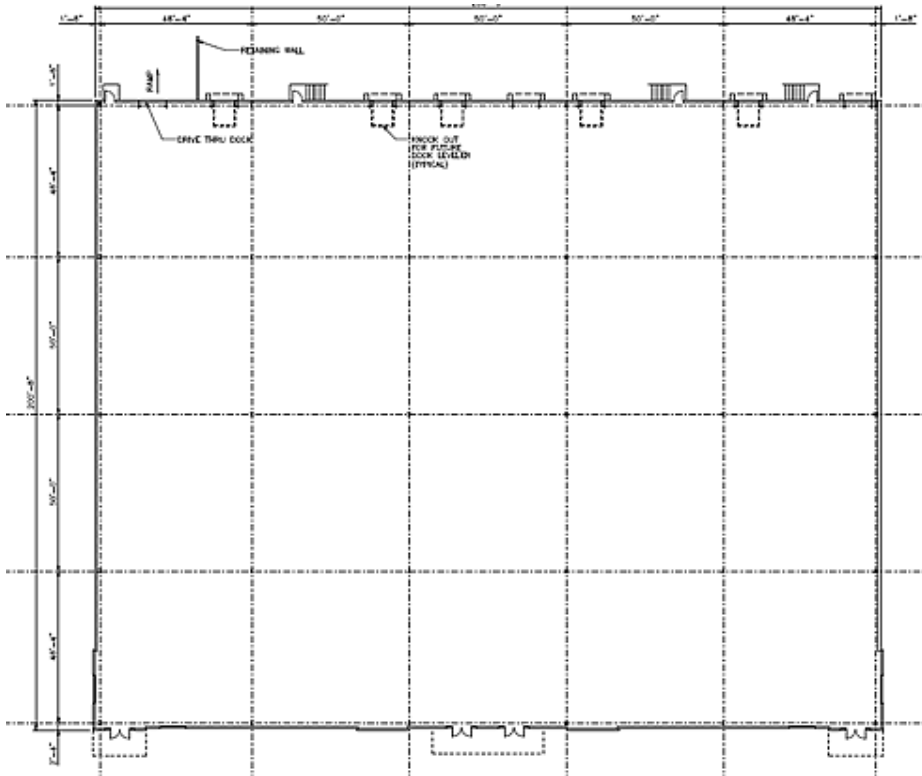
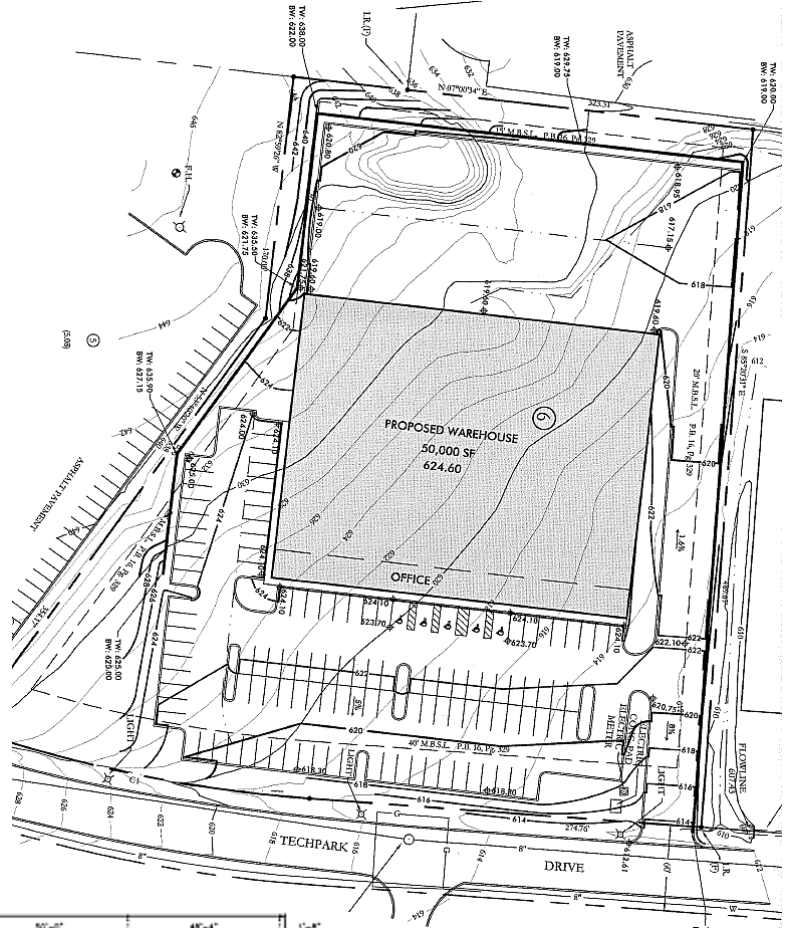


**FOR INFORMATION CONTACT:**

Ben Goodwin 615-346-0290



# 290 TECHPARK DR. 16 to 50,000 SF



**FOR INFORMATION CONTACT:**

Ben Goodwin 615-346-0290

